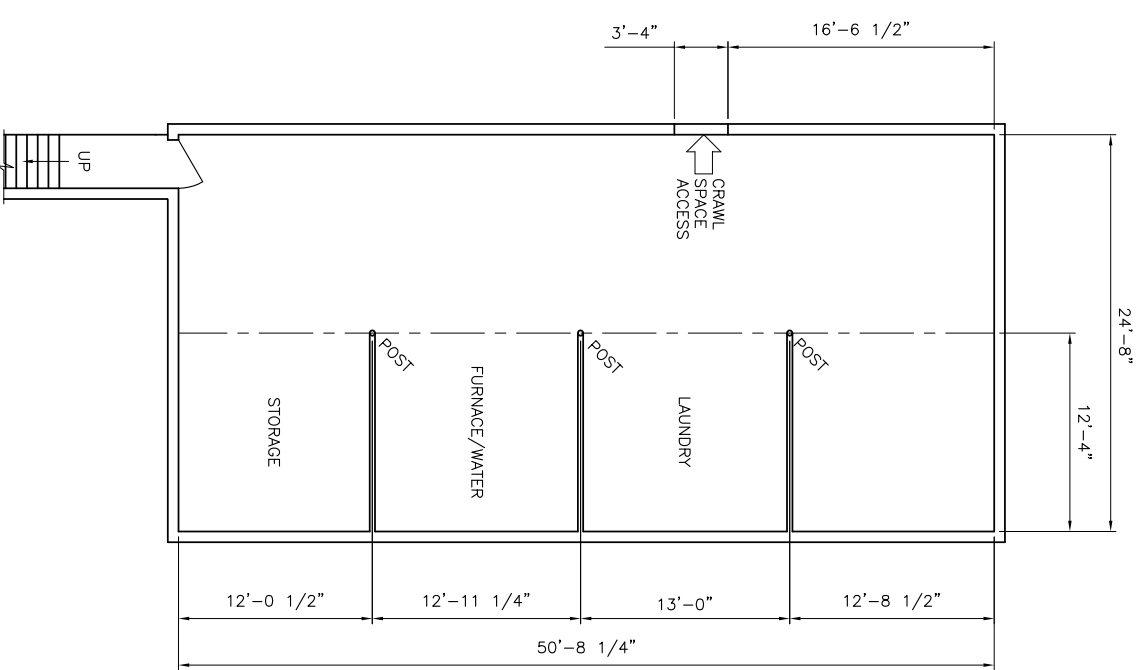


FLOOR PLAN



BASEMENT PLAN

NOTES:

1. CONTRACTOR TO VERIFY ALL DIMENSIONS PRIOR TO START OF WORK.
2. WINDOWS ARE SHOWN IN CONCEPTUAL LOCATIONS ONLY.



REVIEW & COMMENT
JUNE 16, 2009

NO.	DATE	BY	REVISIONS
1	6/16/09	DLK	REVIEW & COMMENT
2			
3			
4			
5			
6			
7			

DWG. NO.	DESCRIPTION
2091150	REFERENCE DWG.

CIM-Tech, Inc.
332 W. US Hwy 30, Suite F
Valparaiso, IN 46385
219-476-0302

CITY OF VALPARAISO
MEN'S HALFWAY HOUSE
1408-1412 CHICAGO STREET
DATE 6/10/09
SITE BY DLK
CHK BY BPG
TWT SCALE 3/8"=1'-0"
SHEET: 1150-001

THIS DRAWING MAY NOT BE USED FOR CONSTRUCTION OR FABRICATION UNTIL SIGNED AS CHECKED AND ISSUED FOR CONSTRUCTION.

This document was created with Win2PDF available at <http://www.win2pdf.com>.
The unregistered version of Win2PDF is for evaluation or non-commercial use only.
This page will not be added after purchasing Win2PDF.